

PATUXENT RIVER NAVAL AIR STATION

Patuxent River, Maryland



Client Project

A leading naval aviation research, development, and testing center needed a temporary modular building that would enable them to continue “business as usual” while the HVAC system in their Public Works building was being replaced.

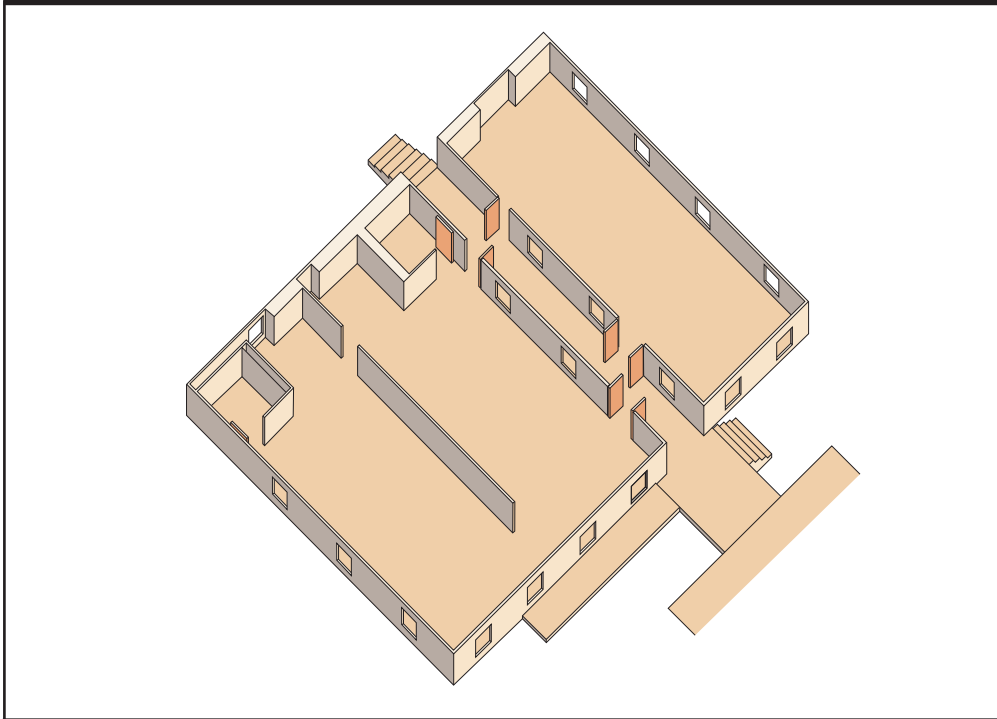
Client Need

Approximately 18,000 people work at Patuxent (Pax) River Naval Air Station in Maryland. In order to keep the station “up and running” during renovations, they needed a fast response vendor of temporary facilities with expertise in government projects. Williams Scotsman's modular building team was selected because of their ability and experience with providing quality products and turn-key services to government as necessary. In addition, the relationships Williams Scotsman had already established with workers within the local community further ensured the success of the project.



PATUXENT RIVER NAVAL AIR STATION

Patuxent River, Maryland



The Williams Scotsman Solution

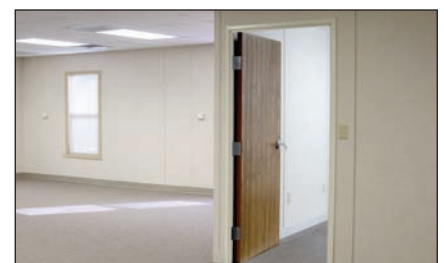
The final project design involved two buildings occupying 4,300 square feet with a boardwalk connector. Williams Scotsman's Redi-Plex Building™ was the perfect choice for this job because its 60' Clear-Span Roof Truss provides a large, columnless space that can remain open or be customized with the Redi-Panel System™ to create any floor plan needed. The flexibility of both the Redi-Plex Building™ and the Redi-Panel System™ allows customers to occupy space up to 50% faster than traditional construction AND gives them the freedom to easily relocate or modify their configuration - cost effectively - at any future time. The end result of this project was 60 work stations, kitchen amenities, and bathroom facilities. Turn-key service included steps, decks, a handicap ramp, and furniture.

The Result

"We were surprised with the comfort and quality of the temporary space, as well as Williams Scotsman's ability to customize the project and accomplish it so quickly. Components for the temporary offices started to arrive in less than four weeks after initiating the project."

– Technical representative (Patuxent River Naval Air Station)

REDI-PANEL SYSTEM™



SPACE BY

WILLIAMS

SCOTSMAN

800.782.1500

www.willscot.com

PRNSCS-0308-3M
© Williams Scotsman 2008