

ROLLING HILLS PREPARATORY SCHOOL

Wilmington, California

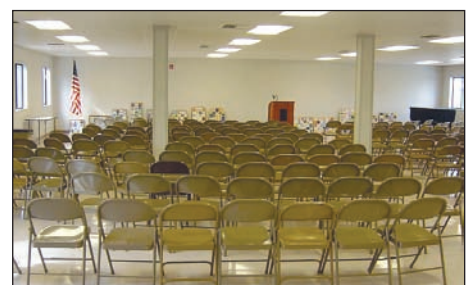


Client Project

For more than 25 years, Rolling Hills Preparatory School has provided academic, arts and athletics programs to grades 6-12. The coeducational day school prides itself on its graduate acceptance rate to many highly-respected colleges and universities throughout the country. Over the years, the existing school campus grew cramped and restricted the ability to increase enrollment. Safety and a lack of control of the areas surrounding the school also gained much attention from the Head of School and the Board. As an independent school, Rolling Hills decided it was time to relocate to a permanent home after leasing classroom space from the local school district for several years. They wanted to do so as quickly as possible, while keeping cost efficiencies and budget in mind.

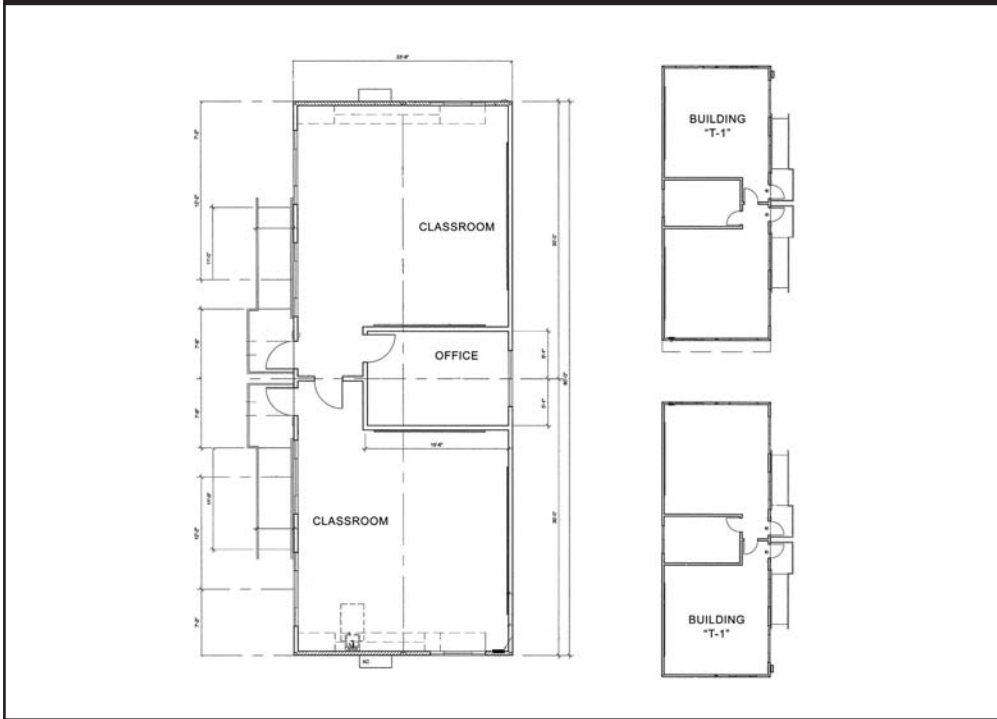
Client Need

Because the new permanent campus had to open in time for school to begin, timing was a major concern for the Head of School. Modular classrooms appeared to be the best solution as their cost, flexibility, and construction timeline would provide instant space for the school. The modulares needed to create space for at least 350 students, however, the new location and classrooms would allow for growth of up to 900 students, which proved beneficial to the Head of School. If a traditionally constructed building plan had been selected, then the school would not have opened in time.



ROLLING HILLS PREPARATORY SCHOOL

Wilmington, California



The Williams Scotsman Solution

Rolling Hills contacted Williams Scotsman based on its reputation as one of the premier providers of modular classrooms to public schools throughout the State of California. Williams Scotsman was able to deliver on superior quality and commitment to great service by meeting its proposed construction schedule and working directly with the architect on Division of State Architects (DSA) permitting and code compliance. Since DSA classrooms are not typically allowed on private school sites, the permitting process, required by the City, was quite extensive. In fact, in order for the classrooms to be accepted within the community, the buildings had to be dual-certified by an engineer. Williams Scotsman assisted Rolling Hills through the process from initial application to certification to final inspection, ensuring school opened as planned. All of the buildings contain DSA and Housing and Community Development (HCD) certified tags.

In approximately 12 months, Williams Scotsman delivered and installed twenty-four DSA classrooms, administrative offices, locker facilities and multi-purpose rooms totaling more than 26,800 square feet. The new facilities allowed for additional learning space, including dedicated science and arts studios. The new location was more accessible, so students could attend a school that was closer to their homes.

The Result

The installation went smoothly. Twenty-four buildings, many of them multi-sectional structures, were in place in three days.

"Williams Scotsman was very accommodating and understanding of the project schedule and was ready and mobilized the minute we said 'go,'" commented Jim Krause, project consultant for the school. "The buildings provide excellent teaching space and offer the faculty the best teaching environment in twenty years."

Rolling Hills Preparatory is currently working with Williams Scotsman to plan for an additional expansion of the campus in the near future.

WILLIAMS
SCOTSMAN

ORDER RECEIVED

1/27/06

DELIVERY

7/15/06

INSTALLATION

9/15/06

SPACE BY

WILLIAMS

SCOTSMAN

800.782.1500

www.willscot.com