

COUNTY OF WALLA WALLA PUBLIC SAFETY BUILDING

Walla Walla, Washington



“The county clearly needed to find new homes for those departments. The route it took was a good one. And it looks good too.”

– Editorial, Walla Walla 'Union Bulletin' September 24, 2001

Project Profile

- The County Sheriff, the County Prosecuting Attorney – and the accompanying staff for both – were in need of a permanent solution for their offices.
- The Downtown Business Association made it a requirement that whatever the building turned out to be, it HAD to match the historical appearance of downtown Walla Walla.
- Williams Scotsman constructed a 15,984 square foot modular structure right in the heart of historic downtown Walla Walla.
- Unique architectural enhancements helped to insure this new building, constructed using such an innovative method, blended in seamlessly with its historic neighbor structures.
- Innovation was used on the interior as well. The building features bullet resistant glass, video security system, proximity and position monitoring door hardware, and it is completely wired for cable TV and data communication.



SPACE BY

WILLIAMS®

SCOTSMAN

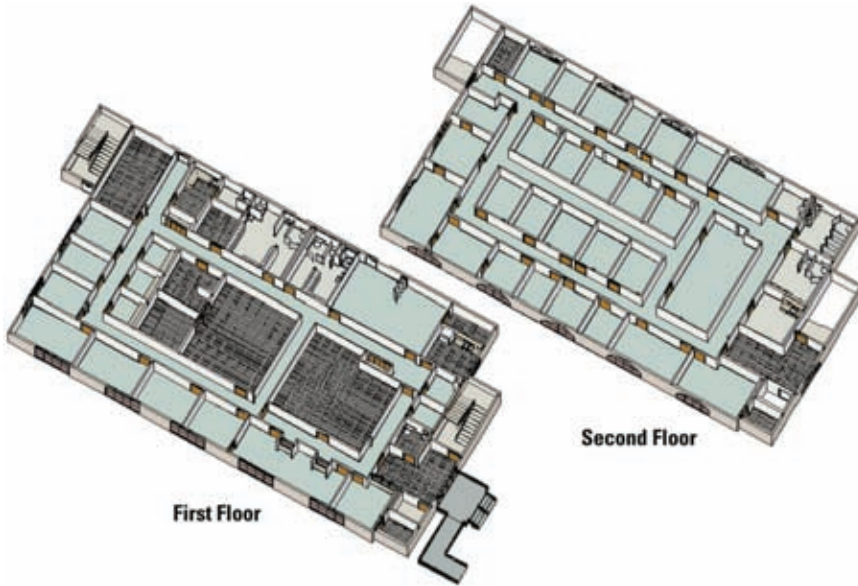
800.782.1500

www.willscot.com

PROJECT CASE HISTORY

COUNTY OF WALLA WALLA PUBLIC SAFETY BUILDING

Walla Walla, Washington



Project Features

- Fypons over the doors and windows
- 2-story, pre-fabricated structure using 20 modular sections
- 14' x 22' tall windows
- Faux keystone bricking
- 4:12 pitch hinged mansard roof structure

Challenge: Seamlessly blend innovative construction method into historic city.

The modular building at the intersection of 5th and Alder Street in downtown Walla Walla, Washington is unlike any structure the locals there have ever seen. Modular buildings, in Walla Walla or anywhere for that matter, are by no means unusual. What makes this a standout project is the attention to detail on the design. The Downtown Business Association made it a requirement that whatever the building turned out to be, it HAD to match the historical appearance of downtown Walla Walla.

Solution: The permanent space the County needs, with the look they want.

The various architectural enhancements used in its construction help to insure no one would ever guess this new building was anything other than a traditional site-built structure, already a part of the neighborhood for years! The result? A two-story, 15,984 square foot structure, better known as the County Public Safety Building, occupied, on the first floor, by the County Sheriff, and on the second floor by the County Prosecuting Attorney. The editors at the Walla Walla 'Union Bulletin' said it best in their September 24th editorial last year, "Well the Public Safety Building is done – and it looks fabulous. The structure, which has a brick facade, blends nicely with others in the downtown core area."

Count on Williams Scotsman.

With over 50 years of experience, Williams Scotsman is the leader in providing flexible, affordable solutions for all types of space requirements.

And with more than 90 offices throughout North America, we have the local expertise to create just the solution you're looking for. Call today.

MODULAR CONSTRUCTION SOLUTIONS

**Project Start to Finish
in Under 4 Months**

PERMITS RECEIVED

6-1-01

DELIVERY & INSTALLATION

7-10-01

OCCUPANCY

9-21-01

SPACE BY

WILLIAMS

SCOTSMAN

800.782.1500

www.willscot.com