

WACHUSETTS REGIONAL SCHOOL DISTRICT

Holden, Massachusetts



Client Project

Wachusets Regional School District, the oldest district in the state of Massachusetts, serves five towns. Each town is represented by a unique school board. Wachusets was experiencing severe overcrowding and as a result the school district's accreditation was in jeopardy.

Client Need

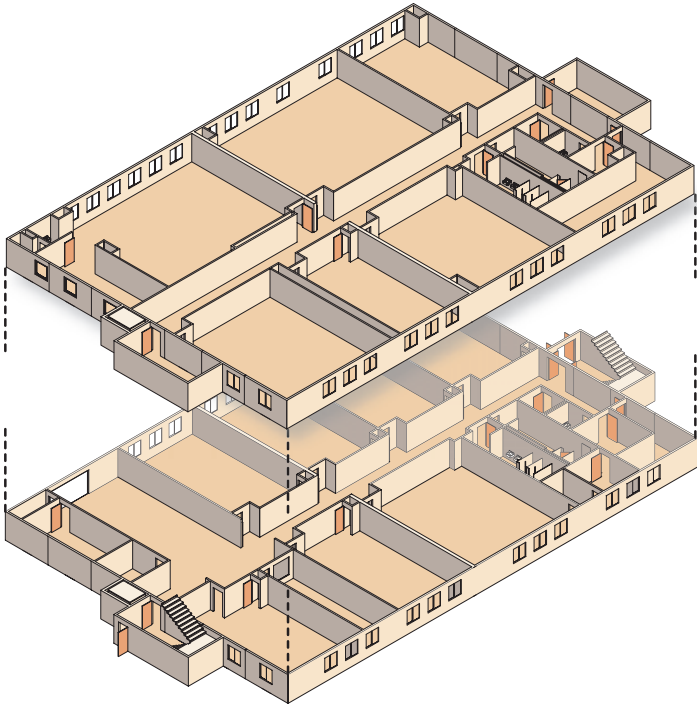
The regional high school required an additional classroom and cafeteria building to meet the requirements of Phase 1. **Williams Scotsman** was awarded this phase of the project and was able to assist the school with the project design. Completion of the building needed to occur before the beginning of the coming school year.



PROJECT CASE HISTORY

WACHUSETTS REGIONAL SCHOOL DISTRICT

Holden, Massachusetts



The Williams Scotsman Solution

Williams Scotsman provided a 25,000 square foot two story classroom building and a 6,000 square foot cafeteria. A connecting corridor was built to link the new building to the existing school. The classroom building included four science labs, seven classrooms, restrooms, computer lab, teacher's lounge, administrative offices and a large life skills classroom. Built-in custom cabinetry was installed in the science labs. The life skills classroom was complete with kitchen, laundry and bathroom facilities. Williams Scotsman installed a computer lab with over three hundred ports. The building has enclosed stairs on either side in addition to an elevator. The elevator shaft totaling twenty eight feet was completely constructed at the local branch and trucked to the site where a crane lowered the shaft into place, saving time and money. The school's outdated alarm system was removed and replaced with a new alarm system. The exterior of the building was finished with Dryvit® and brick accents.

The Result

Wachusetts Regional School District was impressed with **Williams Scotsman's** completion of Phase 1 and their ability to provide design-build services. The project was considered a success by the school board and was awarded first place in the category of *Permanent Factory-Built Education over 10,000 sq.ft.* by the Modular Building Institute.

"Timeline of construction was the most impressive aspect, the District had a need for extremely quick construction in order to be ready for the next school year opening. The opening deadline was met."

-Steve Penka, Business Manager, WRSD

WACHUSETTS REGIONAL SCHOOL DISTRICT

Project Start to Finish

PROJECT AWARDED

12-5-01

DELIVERY

7-3-02

OCCUPANCY

9-9-02

SPACE BY

WILLIAMS

SCOTSMAN

800.782.1500

www.willscot.com